

CASE STUDY

MAJOR MINING SHUTDOWN: BRAKE & LUBRICATION SERVICES

✉ sales@ pressuredynamics.com

🌐 www.pressuredynamics.com

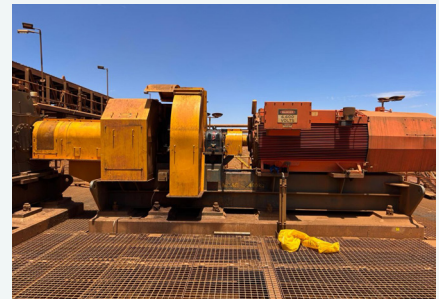
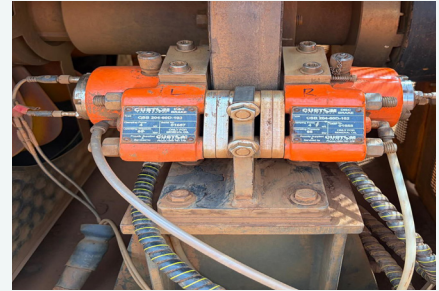


PRESSURE DYNAMICS

INTRODUCTION

The Pressure Dynamics team supported a major mining shutdown, delivering critical brake and lubrication servicing across key fixed-plant assets. Working within a tightly scheduled shutdown window, our specialists ensured essential maintenance activities were completed safely, efficiently, and in alignment with site planning requirements. The shutdown scope included brake servicing across conveyor systems, alongside comprehensive lubrication services for high-demand fixed-plant equipment. Assets supported during the shutdown included:

- Conveyor systems
- Rock breakers
- Apron feeders
- Gyratory crushers



PROCESS

Working closely with site planning teams, our mining and hydraulics specialists coordinated labour, tooling, and scheduling to meet shutdown milestones. Clear communication and disciplined execution were essential to delivering the required scopes within the allocated timeframe. Our team's experience in both hydraulic systems and mechanical maintenance ensured that brake systems and lubrication requirements were completed to specification, reducing the risk of post-shutdown issues and supporting long-term asset reliability.

OUTCOME

All brake and lubrication servicing activities were delivered to plan, supporting the safe recommissioning of critical mining infrastructure. By maintaining strict safety standards and quality control processes, the team contributed to improved equipment performance and reduced downtime risk.